



Mobizent Inventory/Asset Mgt API

Add an open interface to your inventory through our API

Mobizent has built a complete API and Interface into Google maps from any of the Mobizent applications. Mobizent can either provide you with an API, where you can write your own application for mapping or you can add this application to any of the Mobizent applications already built.

The Mobizent Mapping API to allows users with applications that need a simple interface into Google maps the ability to add mapping functionality to their application or one of Mobizents application without diving deeply into the Google maps native code. Customers can create new solutions/extentions for already built web applications in very little time.

Mobizent has provided this ability by building an open API into Google maps. This API allows you to create new applications without disrupting your own Application.

These Extensions that you may now build can provide complete new solutions and still provide updates and a data interface into your own application.

The Mobizent API gives you a quick way of building applications that are new and sometime required to stay with continuous changes required by your customers.

For example, The Mobizent Android Work Order application uses google maps to show the assigned workorders on a map. This helps the worker to plan his route and view all workorders in respect to his current location. User can also get driving directions to any of the workorder locations directly from the Map interface with real-time traffic provided by google.calls.. Mobizent has already built a complete mobile mapping solution for our WorkOrderWorks application and InspectCheck solution that can utilize the mapping API and interface into Google Maps.

With the added API that Mobizent has written, Mobizent will provide documentation that will allow you to write your own applications. The Mobizent API will provide the following components:

Reference: A listing of all the functionality in excruciating detail. This includes all datatype and function specs.

Guides: This will explain how to use the Mobizent API.

Tutorials: This will provide your with specific things that you can do with the API.

Abstractions with

Examples: This API is one big abstraction but Mobizent has tried to remove as many abstractions as possible. Mobizent provides real world examples throughout the API documentation.

Quick Start:

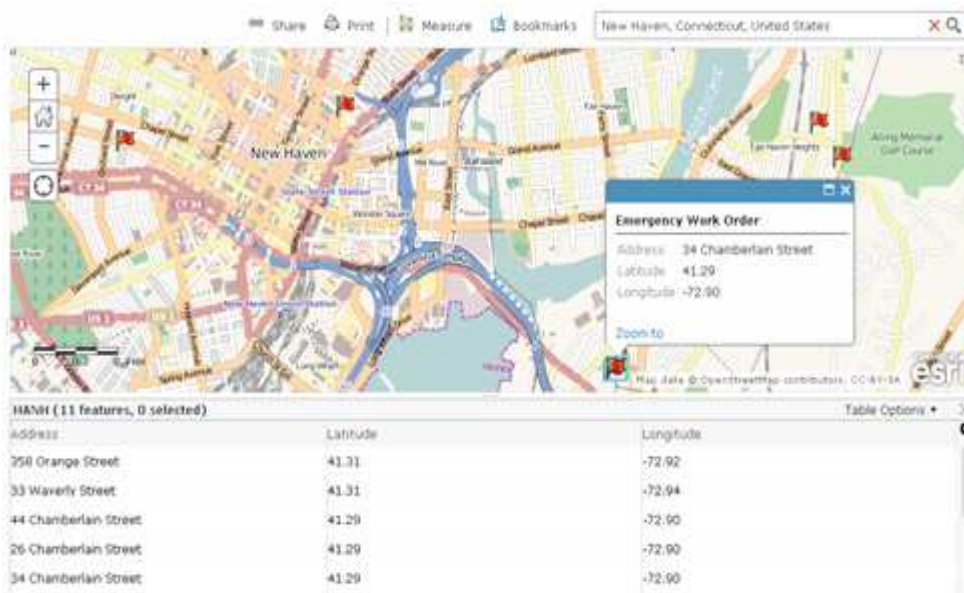
Mobizent provides the API with a quick start guide. The goal of the quick start is to walk the user

through the minimal steps needed to do the smallest thing possible in your API. For example, our quickstart guide has the user download our SDKs and then save one object to our platform.

Multiple Languages: Mobizent API supports multiple languages, via client libraries.

Error Cases: The Mobizent reference will include every known error case and every assumption that is made, either implicitly or explicitly.

Sample Applications: Mobizent will provide working sample applications. Mobizent feels that application code is the best way to communicate how everything in your API ties together and how it integrates with other systems.



address
345 Plainfield Avenue, Suite 204
Edison, New Jersey, 08817

phone
877 405 1894

email
sales@mobizent.net

website
www.mobizent.net